

MEI 2025



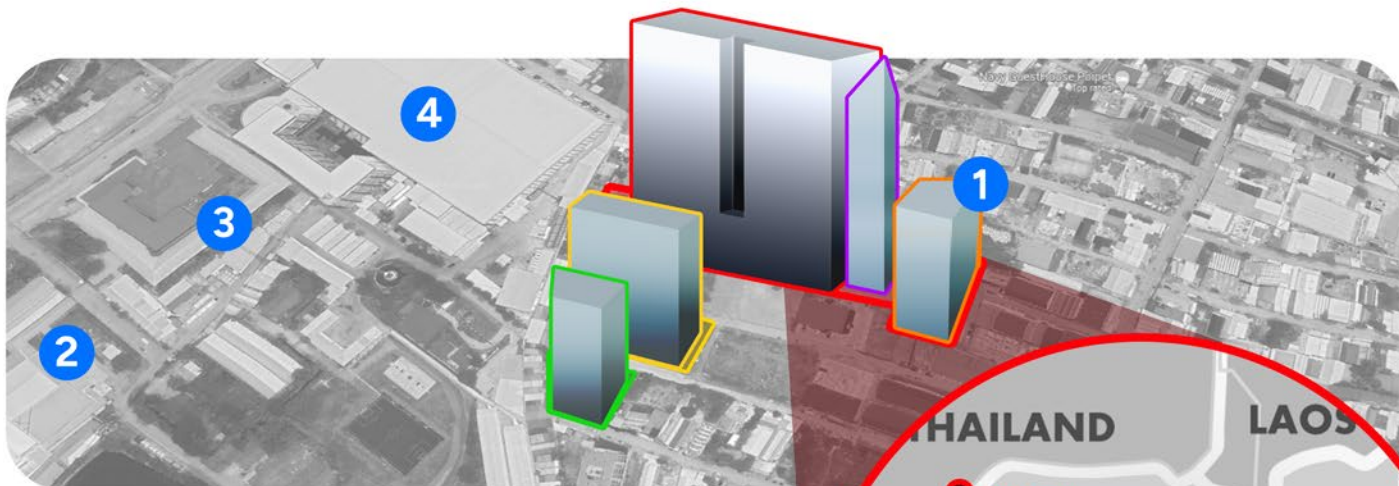
# OFFICE LANDMARKS











- ISTANA HOTEL & CASINO
- THE LOTUS
- SBC TOWER
- APARTMENT SITE (COMING SOON)
- APARTMENT SITE (COMING SOON)



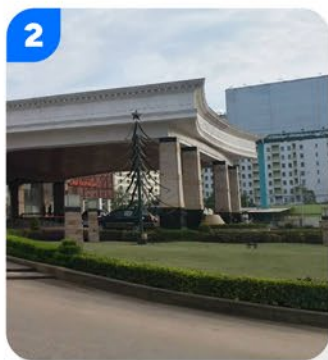
## PROJECT INFORMATION

Poipet is primarily known as a major border crossing between Cambodia and Thailand. It is one of the busiest border crossings in Southeast Asia, with thousands of people crossing daily for trade, tourism, and other purposes. The town serves as a significant commercial and trading hub due to its strategic location on the border. You'll find a wide range of goods and commodities being traded here, including textiles, electronics, and agricultural products.

Poipet has become a popular destination for business, tourism and entertainment with several large casinos and resorts catering to both local and international visitors. These establishments offer a variety of gaming options, dining experiences, and live entertainment.



1. ISTANA HOTEL & CASINO



2. STAR VEGAS CASINO

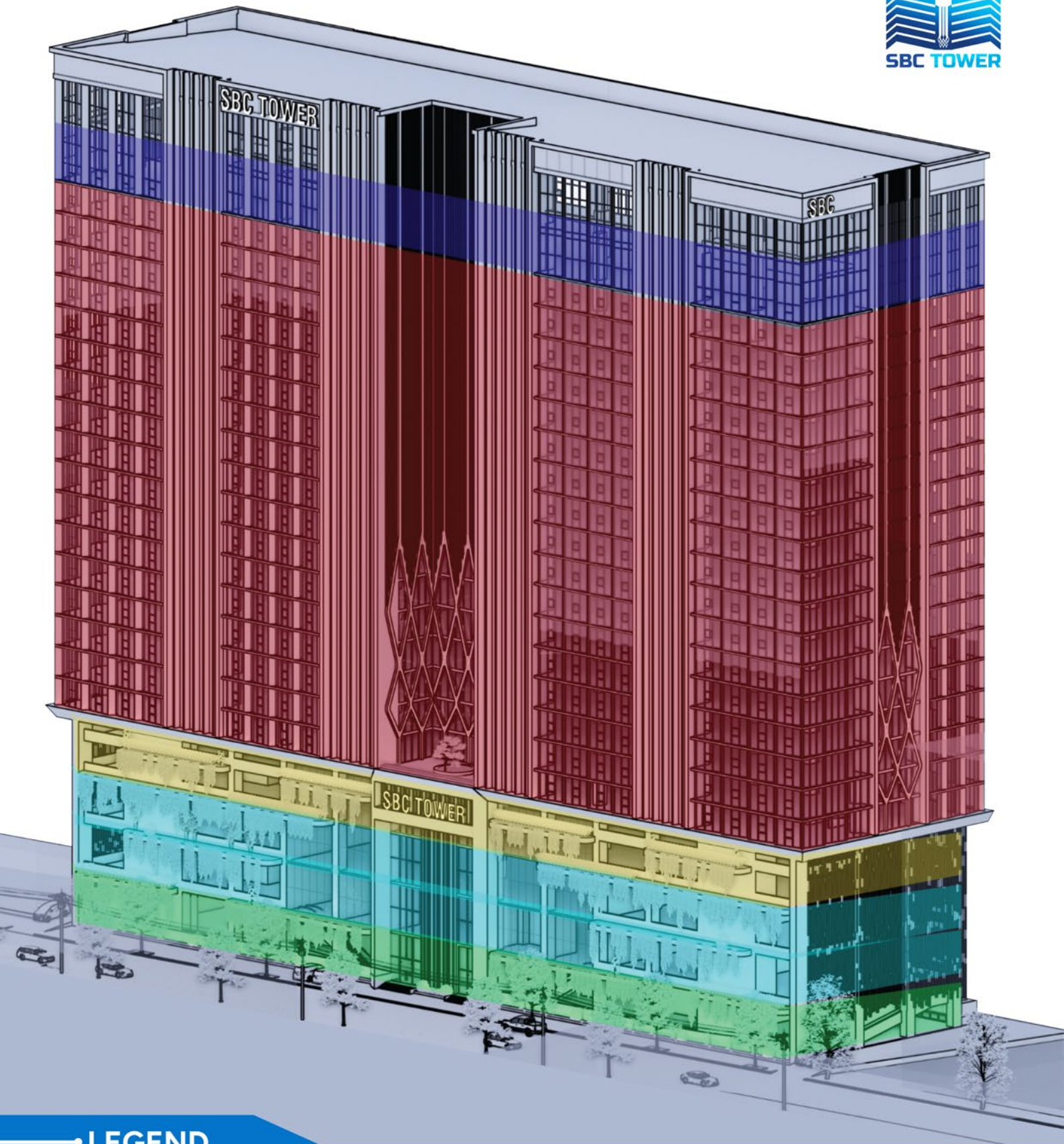


3. DNA STAR CASINO



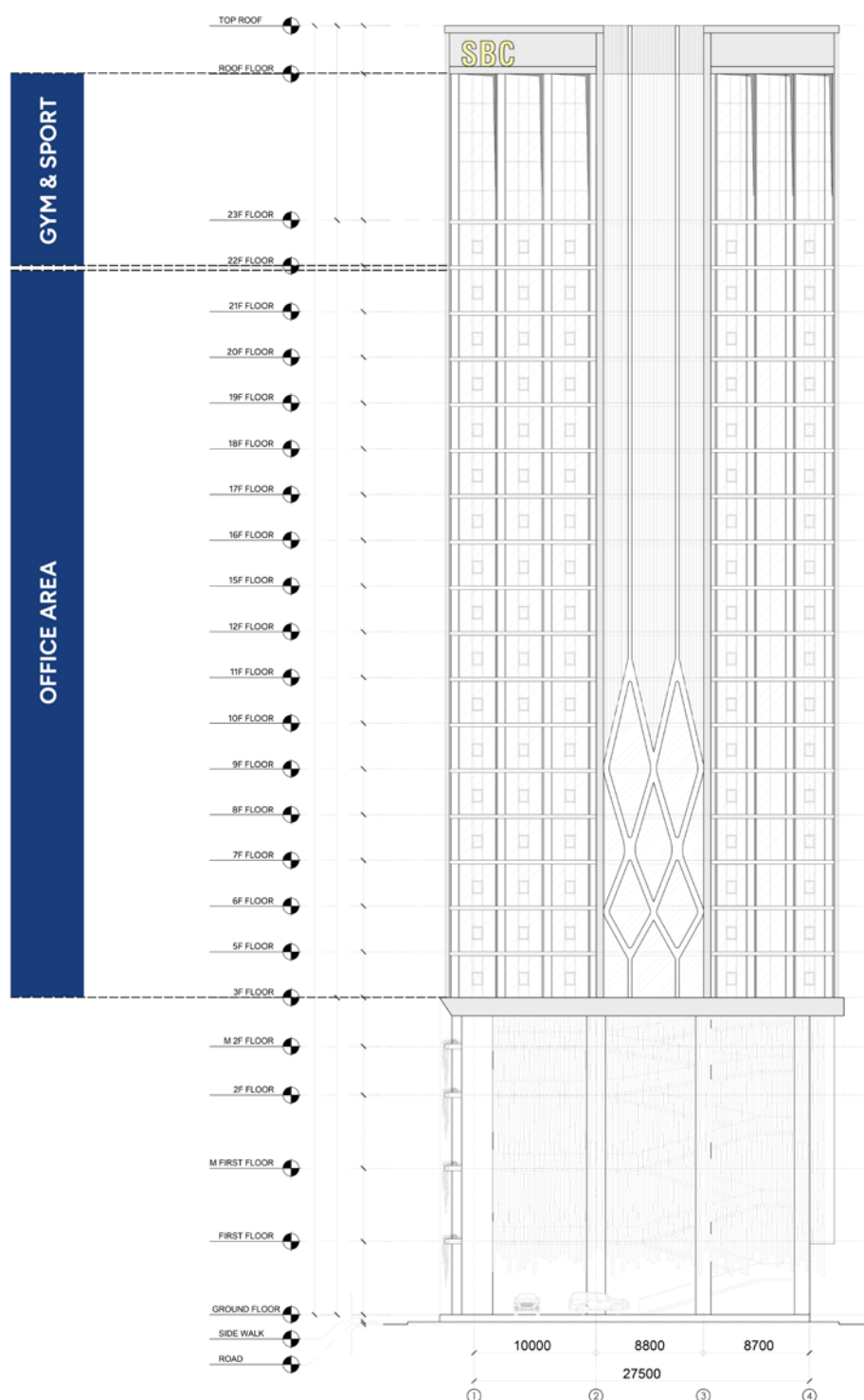
4. GALAXY CASINO





## LEGEND

<span style="color: green;">■</span> GROUND FLOOR	Lobby - Motorcycle Parking - Car Parking
<span style="color: cyan;">■</span> FLOOR 1 - M1F	Food Court - Minimart - Marketing Galery & Motorcycle Parking
<span style="color: yellow;">■</span> FLOOR 2 - M2F	Motorcycle Parking
<span style="color: red;">■</span> FLOOR 3 - 21F	Office Space
<span style="color: blue;">■</span> FLOOR 22	Gym - Free Sport Area - Table Tennis & Coffee Shop
<span style="color: purple;">■</span> FLOOR 23	Badminton Court - Futsal Field - Basketball Court - Pool Table & Coffee Shop



<b>Description</b>	Twin tower with 23-storey tower	<b>Building Area</b>	GFA +/- 85,000 sqm
<b>Power supply</b>	12,000 kVA	<b>Power backup</b>	100% backup 6 x 1,250 kVA
<b>Lift</b>	Card Lift Access	<b>Air conditioning</b>	Alumunium Air Conditioner Grill
<b>Fire department</b>	Smoke and heat detector, fire alarm, sprinkler, hydrant box, fire extinguisher in every floor (according to NFPA standards)		
<b>Security</b>	CCTV at public areas, IP camera, digital storage		



## SBC Tower

Step into your new business oasis!

Unlock a workspace that redefines productivity and comfort within our modern building. Whether you're looking to boost your energy in the indoor gym, refine your strategy in our marketing gallery, or enjoy some downtime on the badminton court, basketball court, or futsal court, we have you covered.

Our sophisticated meeting rooms are designed to facilitate your most important discussions and deals. Meanwhile, our beautifully designed interior offices provide the perfect environment for innovation and growth. And when it's time for a break, our diverse food court offers a range of culinary delights to keep you energized.

Discover a business space where your success is our priority, your ideal work environment is just a step away.





# ***FACILITY***



SBC TOWER

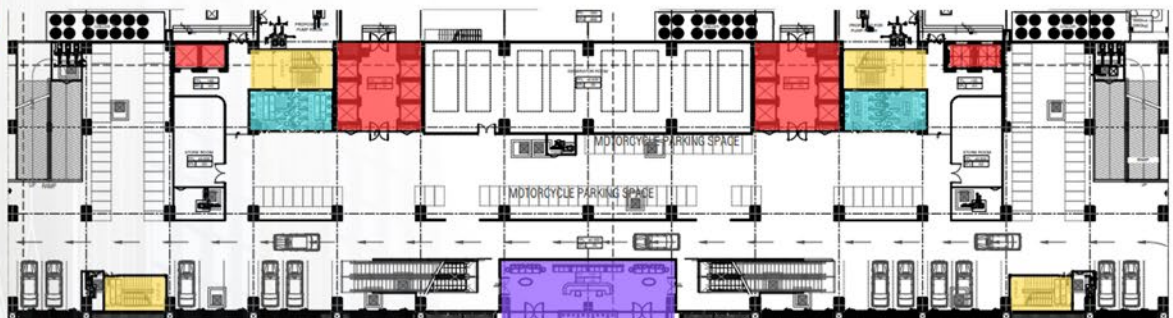




# SBC TOWER LOBBY



80M<sup>2</sup>

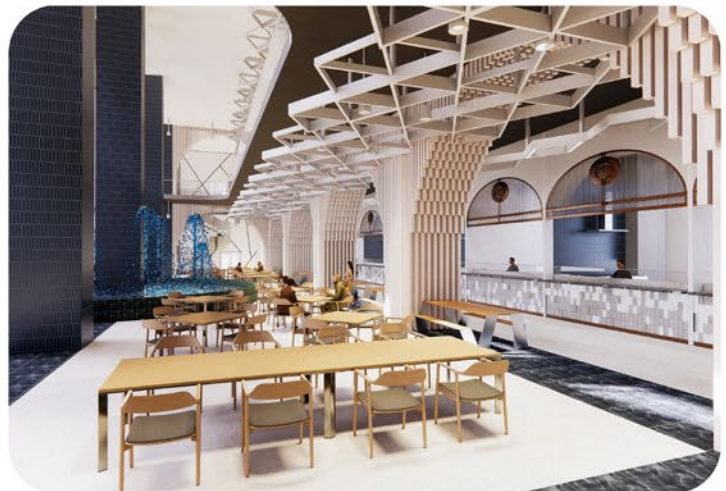
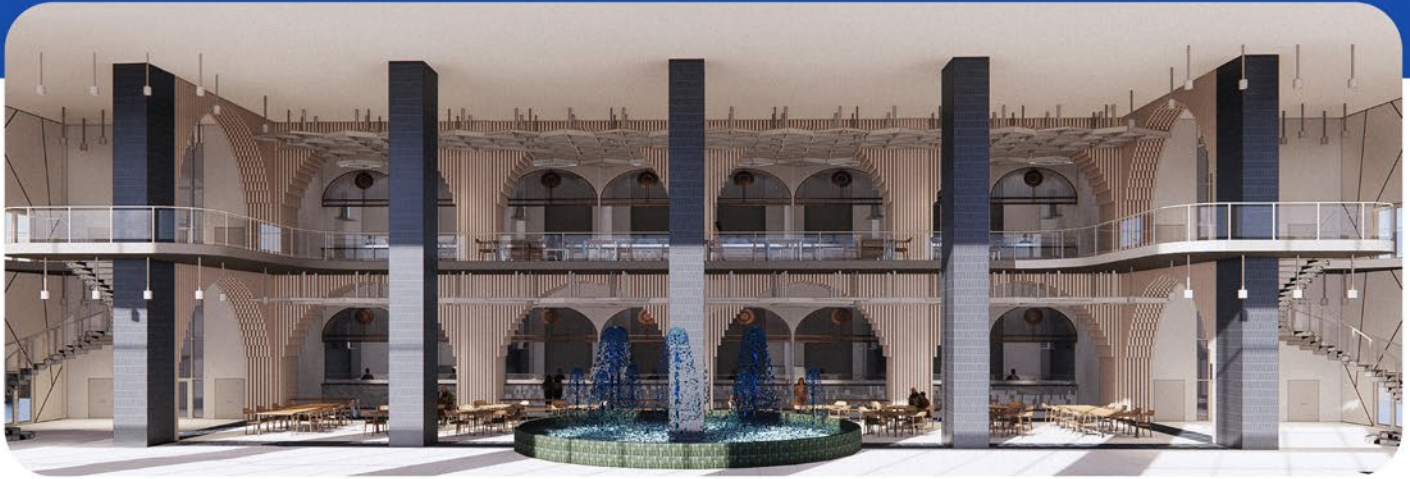


## LEGEND

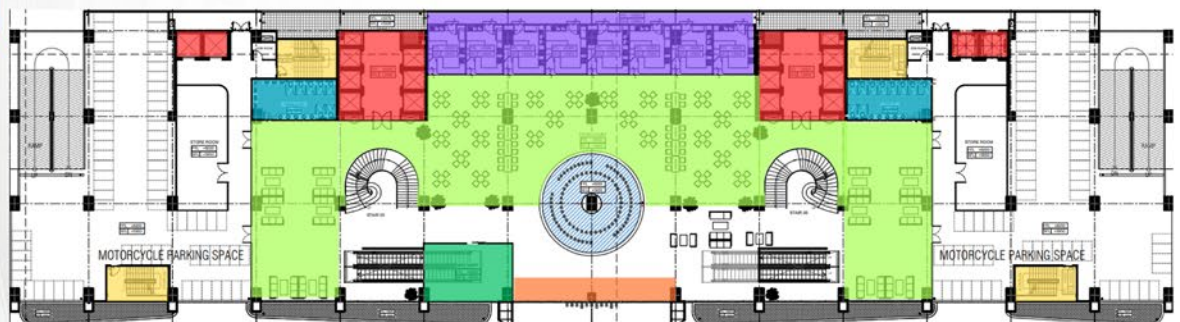
- Lobby Area
- Restroom
- Lift Access
- Staircase



# MARKETING GALLERY & FOOD COURT



1.145M<sup>2</sup>



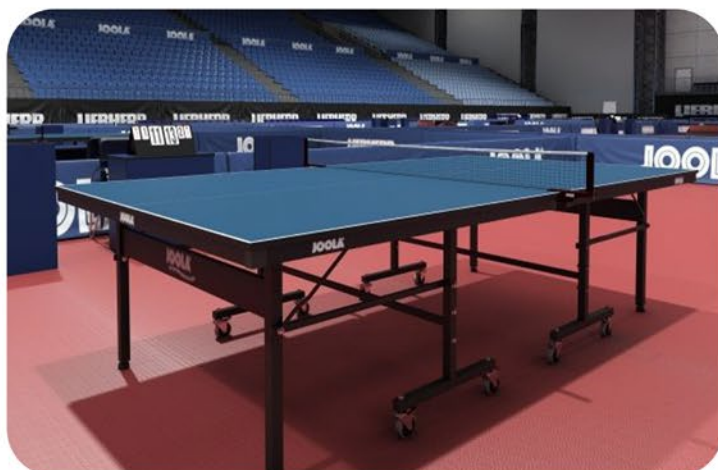
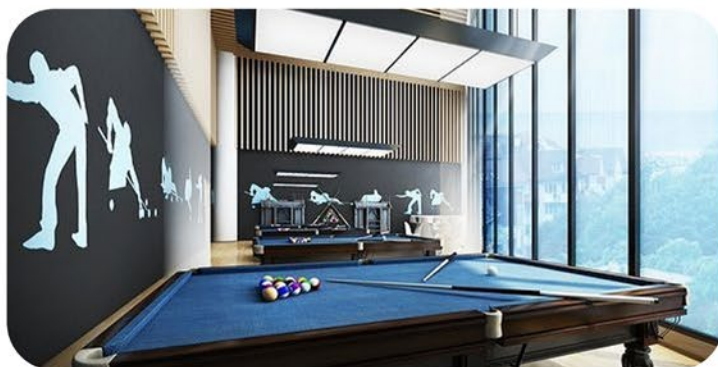
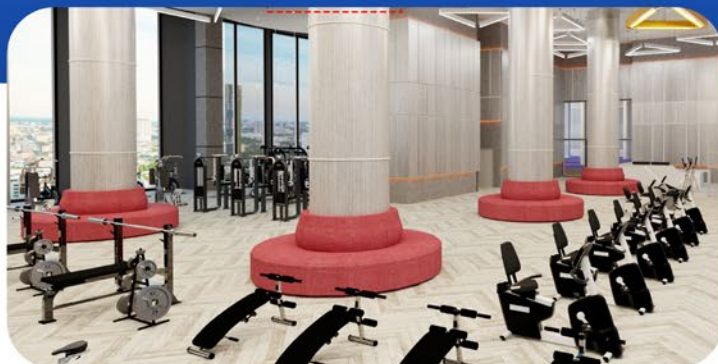
## LEGEND

- |                   |             |
|-------------------|-------------|
| Marketing Gallery | Food Court  |
| Food Stall        | Mini Mart   |
| Restroom          | Lift Access |
|                   | Staircase   |



# 22nd FLOOR

## GYM & SPORTS AREA



2.836M<sup>2</sup>



### LEGEND

- |          |              |                 |
|----------|--------------|-----------------|
| Gym      | Free Sport   | Table Tennis    |
| Kitchen  | Coffee Break | Locker & Shower |
| Restroom | Lift Access  | Staircase       |

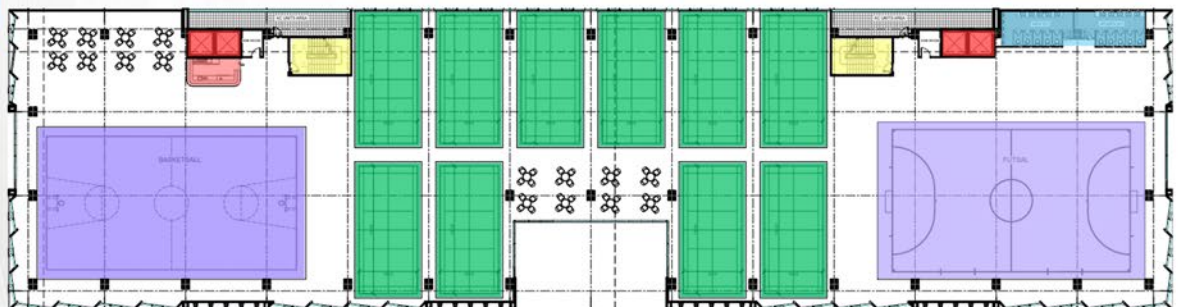


23rd FLOOR

# SPORTS AREA



2.836M<sup>2</sup>



## LEGEND

- |                     |                 |                   |
|---------------------|-----------------|-------------------|
| Basketball & Futsal | Badminton Court | Coffee Break Area |
| Restroom            | Lift Access     | Staircase         |





***OFFICE***

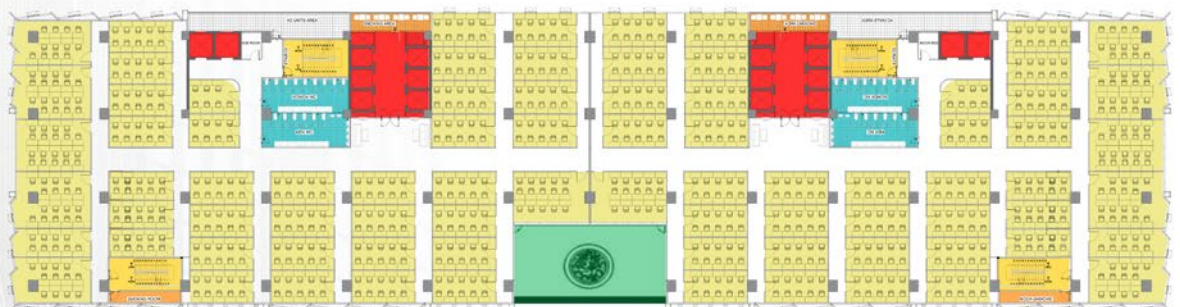




# 3 - 7th FLOOR (FOR RENT) OFFICE AREA



3.074M<sup>2</sup>



## LEGEND

- |             |              |           |
|-------------|--------------|-----------|
| Office Area | Smoking Room | Balcony   |
| Restroom    | Lift Access  | Staircase |

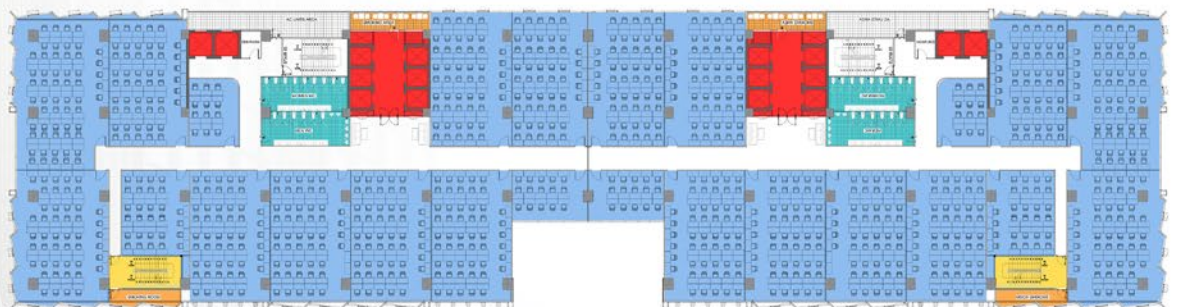


8 - 21st FLOOR

# OFFICE AREA



2.944M<sup>2</sup>



## LEGEND

- Office Area
- Smoking Room
- Restroom
- Lift Access
- Staircase





Hi-Speed Internet



24 Hours Security



Generator



Access Card



Fire Protection

# SAFETY & SECURITY







**SBC Towers Co., Ltd.**

Paoy Paet, Banteay Meanchey Province,  
Krong Poi Pet, Kamboja

## CONTACT NUMBER



GRD  
+63 956 854 6598



LM  
+63 962 929 8244



MRY  
+85 569 682 813



VRS  
+85 581 622 316

**2025 COMPLETION**

